

# Eliminate the summer reading slide.



Kids Read Now partners with school districts to keep all kids reading through the summer and close the achievement gap by providing a proven summer reading program. Choose from three proven programs to meet your needs... Details on page two.

## How it works *Read a book, get a book. All summer long.*

### Spring Setup



Teachers help students select 9 books they want to read.

Parents provide summer contact info and agree to help with summer reading.



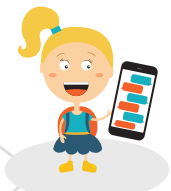
Families attend Family Reading Night and receive each student's first three books.

### Summer Engagement



Students read throughout the summer, and families use the discovery sheets to talk about the books.

Parents send Kids Read Now a call/text/email telling us which book they read.



We mail another book home!

## Results

Each fall, an independent, third-party data firm compares the change in spring-to-fall reading scores for those who participate to those who do not, to see if there were any meaningful differences. With both the standard and comprehensive programs, your district will receive a national level, KRN program-wide report showing the results. The reading score analysis is the perfect way to show your board, parents, and community that your summer learning initiatives are working.

KRN students who completed the program GAINED nearly

# 1 MONTH

of reading skills vs. those who didn't participate.

Students who participated in KRN for two or more years GAINED

# 1.4 MONTHS

of reading skills vs. those who didn't participate.

# 2020 Kids Read Now Programs

## All programs include:\*

- Self-selection from “Wish List”
- Bilingual materials & book options
- Students keep the books
- Wish List sent home
- Contact choice (App/Text/Email/Call)
- KRN parent app for book discussions and reporting in 100+ languages
- Customized Discovery Sheets
- Kick-off teacher training video
- Auto-enrollment w/ CSV upload
- Online training
- Unlimited educator support
- Unlimited multilingual parent support via Facebook, chat or toll free
- KRN data entry of book selections
- Family Reading Event (FRE) Tool Kit
- Online data portal access
- Program summary overview

## BASIC

**4 Book Program**  
No Parent Reporting Required  
Grant Eligible

### BOOKS TO KEEP

Book set of 150+ titles - \$500/set  
**1** book at FRE  
**3** books auto-shipped  
**4** books guaranteed  
**4** book program (*parent reporting optional*)

### PARENT ENGAGEMENT

One-page Parent Guide  
 Periodic reminders to read

### DISTRICT LEVEL RESOURCES

Digital certificates of completion

**\$25**  
per student

## STANDARD

**4-9 Book Program**  
Parents Report Reading  
Grant Eligible

Book Set of 150+ titles - \$500/set  
**3** books at FRE  
**1** book auto-shipped  
**4** books guaranteed  
 Up to **5** more books (*parent reporting*)  
**9** book (*eligible*) program

Multi-page Parent Guide  
 Weekly reminders to read  
 Pre-program contact  
 Pre-program postcard

Mid-summer Progress Report  
 Certificates of completion

**\$40**  
per student

## COMPREHENSIVE

**6-9 Book Program**  
Parents Report Reading  
Grant Eligible

**1** Book set per school\*\*—a \$1200 value!  
**3** books at FRE  
**3** books auto-shipped  
**6** books guaranteed  
 Up to **3** more books (*parent reporting*)  
**9** book (*eligible*) program

Multi-page Parent Guide  
 Weekly reminders to read  
 Pre-program contact  
 Pre-program postcard

Mid-summer Progress Report  
 Customized certificates of completion  
 Classroom posters  
 Prizes for fall assembly

**\$55**  
per student

## Program Timeline

Late Fall	Program Commitments Due
Late Winter	Onboarding/Training
Spring	Enrollment
Last Month Of School	Family Reading Night
Mid-Summer	Home Book Delivery
Fall	Fall Rewards & Reports

## Savings Incentives & Grants

<b>November 15</b>	<b>January 31</b>
3% Early Signing	3% Early Payment

Additional volume incentives are available.

\* Program details subject to change.

\*\*Participating buildings must have at least 150 students participating in the KRN program in order for this feature to be included in the per-student investment of the program.